

## Anti-EIF4EBP1 Polyclonal Antibody

Cat:K008094P

### Summary:

---

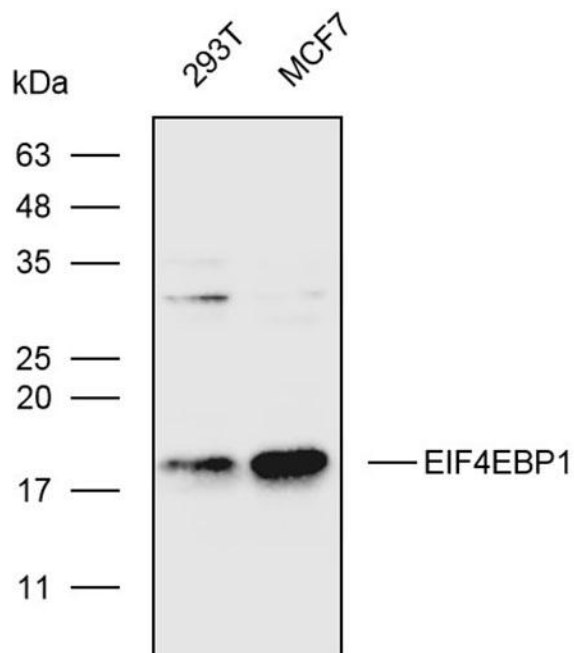
<b>【Product name】</b> : Anti-EIF4EBP1 antibody	<b>【Source】</b> : Rabbit
<b>【Isotype】</b> : IgG	<b>【Species reactivity】</b> : Human Mouse Rat
<b>【Swiss Prot】</b> : Q13541	<b>【Gene ID】</b> : 1978
<b>【Calculated】</b> : MW:13kDa	<b>【Observed】</b> : MW:18kDa
<b>【Purification】</b> : Affinity purification	
<b>【Tested applications】</b> : WB IHC	
<b>【Recommended dilution】</b> : WB 1:500-2000. IHC 1:25-100.	
<b>【WB Positive sample】</b> : 293T,MCF7	
<b>【IHC Positive sample】</b> : Human ovarian cancer	
<b>【Subcellular location】</b> : Cytoplasm Nucleus	
<b>【Immunogen】</b> : Recombinant protein of human EIF4EBP1	
<b>【Storage】</b> : Shipped at 4°C. Upon delivery aliquot and store at -20°C	

### Background:

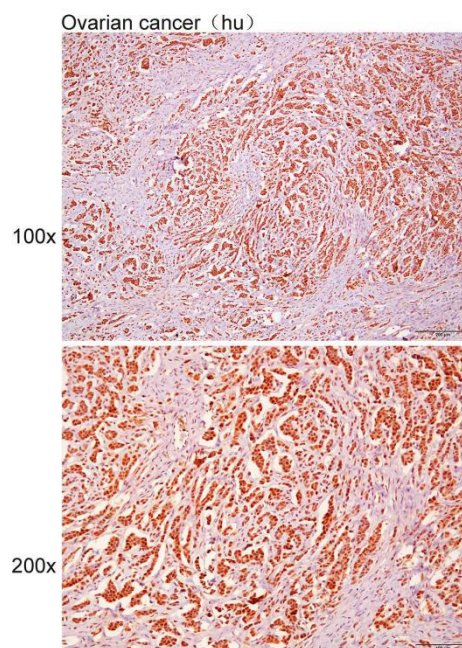
---

This gene encodes one member of a family of translation repressor proteins. The protein directly interacts with eukaryotic translation initiation factor 4E (eIF4E), which is a limiting component of the multisubunit complex that recruits 40S ribosomal subunits to the 5' end of mRNAs. Interaction of this protein with eIF4E inhibits complex assembly and represses translation. This protein is phosphorylated in response to various signals including UV irradiation and insulin signaling, resulting in its dissociation from eIF4E and activation of mRNA translation.

## Verified picture



Western blot analysis with EIF4EBP1 antibody diluted at 1:500; Lane: 293T, MCF7



Immunohistochemistry of paraffin-embedded Human ovarian cancer with EIF4EBP1 antibody diluted at 1:30